



2018 #RealCollege Survey School Report for Golden West College



Report prepared by the Hope Center for College,
Community, and Justice at Temple University.

Presented by GWC Office of Institutional Effectiveness



The #RealCollege survey is the nation's largest annual assessment of basic needs security among students.

Survey specifically evaluates access to affordable food and housing.

Fall 2018 Survey with 123 two- and four-year institutions across the United State.



Nearly 86,000 participants



11,600 GWC Fall 2018
students invited to participate
in survey

331 students participated

2.9% response rate



Golden West College

46% of respondents were food insecure in the prior 30 days

59% of respondents were housing insecure in the previous year

16% of respondents were homeless in the previous year



Golden West College

46% of respondents were food insecure in the prior 30 days

59% of respondents were housing insecure in the previous year

16% of respondents were homeless in the previous year

United States

45% of respondents were food insecure in the prior 30 days

56% of respondents were housing insecure in the previous year

17% of respondents were homeless in the previous year

Food Insecurity

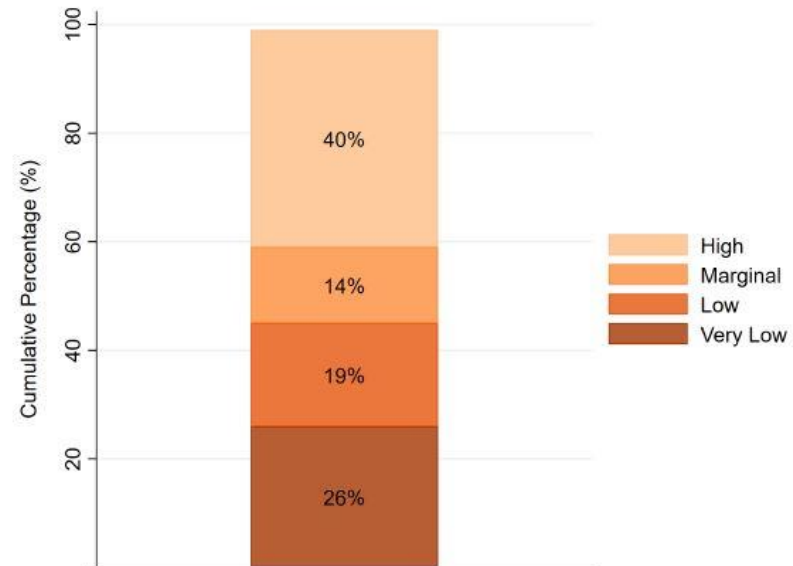
Food insecurity is the limited or uncertain availability of nutritionally adequate and safe food, or the ability to acquire such food in a socially acceptable manner. The most extreme form is often accompanied with physiological sensations of hunger.

U.S. Department of Agriculture's 18-item set of questions were used

During the 30 days preceding the survey,

Approximately **46%** of survey respondents at Golden West College experienced low or very low levels of food security.

Figure 1. Food Security Among Survey Respondents at Golden West College



Source: 2018 #RealCollege Survey

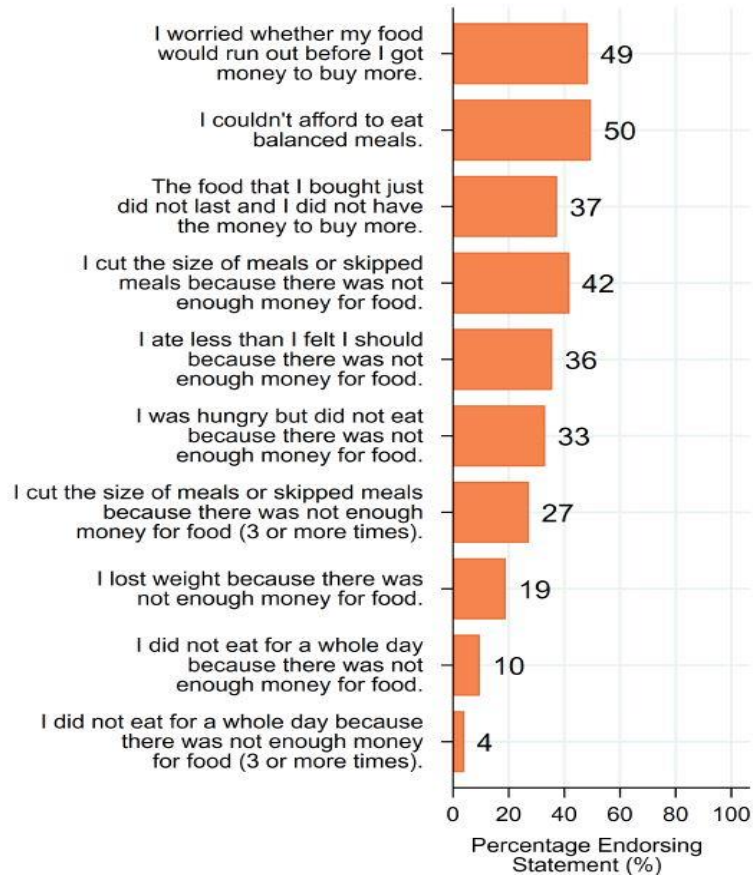
Notes: According to the USDA, students at either low or very low food security are termed food insecure. For the full list of questions used to measure food security, see our full report available at www.hope4college.com. Cumulative percentage may not add up to 100 due to rounding error.



During the 30 days preceding the survey,

49% of survey respondents at Golden West College worry about running out of food before having money to buy more. 50% cannot afford to eat balanced meals.

Figure 2. Food Insecurity Among Survey Respondents at Golden West College



Source: 2018 #RealCollege Survey



Housing Insecurity

Housing insecurity includes a broad set of challenges such as the inability to pay rent or utilities or the need to move frequently.

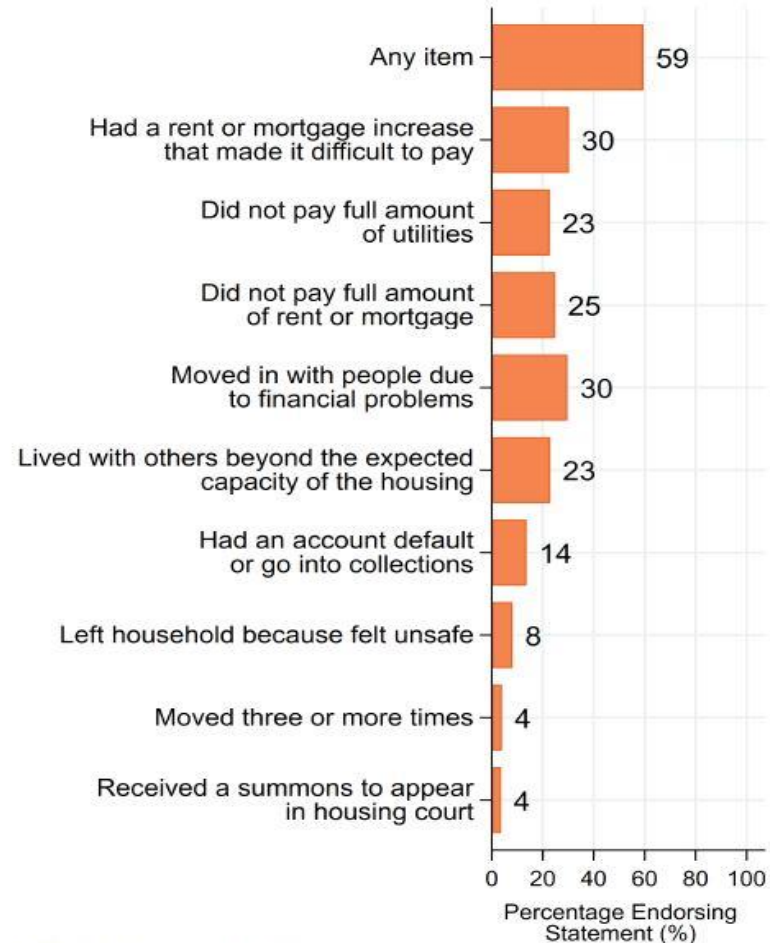
All of these challenges affect students, and results suggest they are more likely to suffer some form of housing insecurity than to have all of their needs met during college.

Students are classified as housing insecure if they answered affirmatively to experiencing at least one of those items in the previous year.

How prevalent is housing insecurity at Golden West College?

59% of survey respondents are housing insecure.

Figure 3. Housing Insecurity Among Survey Respondents at Golden West College



Source: 2018 #RealCollege Survey



A young woman is shown from the chest down, wearing a light blue denim jacket over a white t-shirt. She has a grey backpack on her back and is holding several books in her hands. She is also wearing a gold necklace with a white bead. The background is a blurred outdoor setting.

Homelessness

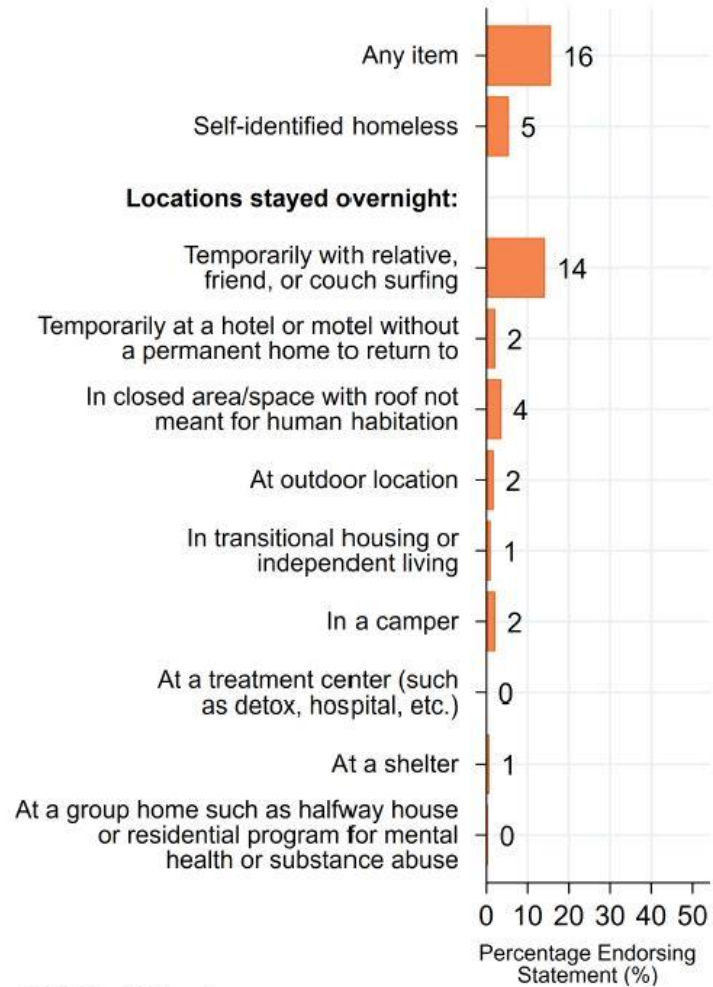
Homelessness means that a person does not have a stable place to live. Students were identified as homeless if they responded affirmatively to a question asking if they had been homeless or they experienced living conditions that are considered signs of homelessness in the previous year.

Homelessness among students was assessed with a tool developed by California State University researchers.

How prevalent is homelessness at Golden West College?

16% of survey respondents experience homelessness.

Figure 4. Homelessness Among Survey Respondents at Golden West College



Source: 2018 #RealCollege Survey



Conclusion

- The #RealCollege Survey affirms what has been evident to many college administrators, faculty, staff, and students for years: basic needs insecurity is a condition challenging many undergraduates pursuing credentials.
- The scope of the problem described here is substantial and should be cause for a systemic response.

Assessment

- The Stand
- The Rack
- Homeless student liaison (Andrea)
- Shower Facilities
- Locker Rentals
- Senate Towel Drive
- Do students know that these are available to them?

Next Steps

- GWC will re-administer this survey in collaboration with The Hope Center during the Fall 2019 semester.
- Focus group
- Expand marketing of services?
- Are there other partnerships we can tap into?
- What other resources/services can we provide?